

# GENERAL PURPOSE NARROW BAND FM RECEIVERS

## RX150NB – RX300NB – RX450NB

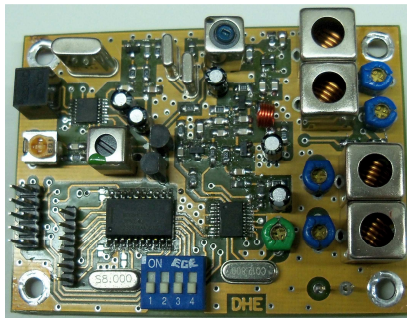
This series of receivers are general purpose modules for narrow FM modulation.

The most common uses are wireless remote control, FM repeaters, security.

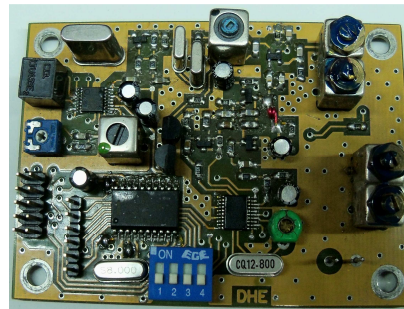
Support up to 8 user programmable channels from a PC using a standard communications program via an RS232 interface and a TTL level converter.

Channel selection is made by dip switch.

This receivers are double conversion type with a high selectivity front to minimize spurious signals interference when operating in crowded radio frequency environments..



**RX150NB & RX300NB**



**RX450NB**

### TECHNICAL SPECIFICATIONS RX150NB - RX300NB – RX450NB

#### GENERAL

Type	Double conversion, 21.4 Mhz & 455 kHz.
Frequency programming	PC with communication program.
Frequency selection	Dip switches, 8 channels.
Frequency stability	± 5 ppm, 0 °C to +40 °C.
Deviation	± 5 KHz @ 100 % modulation.
Output level	0.5 Vef @ 1 KHz, 3 .5 KHz dev.
Frequency response	20 Hz / 4 KHz @ - 3 dB
Antenna	50 Ohms unbal.
Power request	12.0 Vcc to 14.0 Vcc, 0.06 A typical.
Dimensions	56 X 76 mm.

#### RECEIVER

	<b>RX150NB</b>	<b>RX300NB</b>	<b>RX450NB</b>
Frequency range	134-152 Mhz / 151-174 Mhz	200 to 400 Mhz in 25 Mhz steps.	400 to 500 Mhz in 25 Mhz steps.
Sensibility	> 0.25 uV @ 12 dB Sinad, 3.5 KHz deviation typical.	> 0.30 uV @ 12 dB Sinad, 3.5 KHz deviation typical.	> 0.35 uV @ 12 dB Sinad, 3.5 KHz deviation typical.
Image reject	> 55 dB.	> 50 dB.	> 50 dB.
Bandwidth without retuning	1.5% typical.	1.5 / 2 % typical.	1.5 / 2 % typical.



email: [info@dhesystems.com](mailto:info@dhesystems.com)

[www.dhesystems.com](http://www.dhesystems.com)

[www.facebook.com/dhesystems](http://www.facebook.com/dhesystems)

Rev.: 1.00 Date: 08/01/19

Specifications may change without notice.